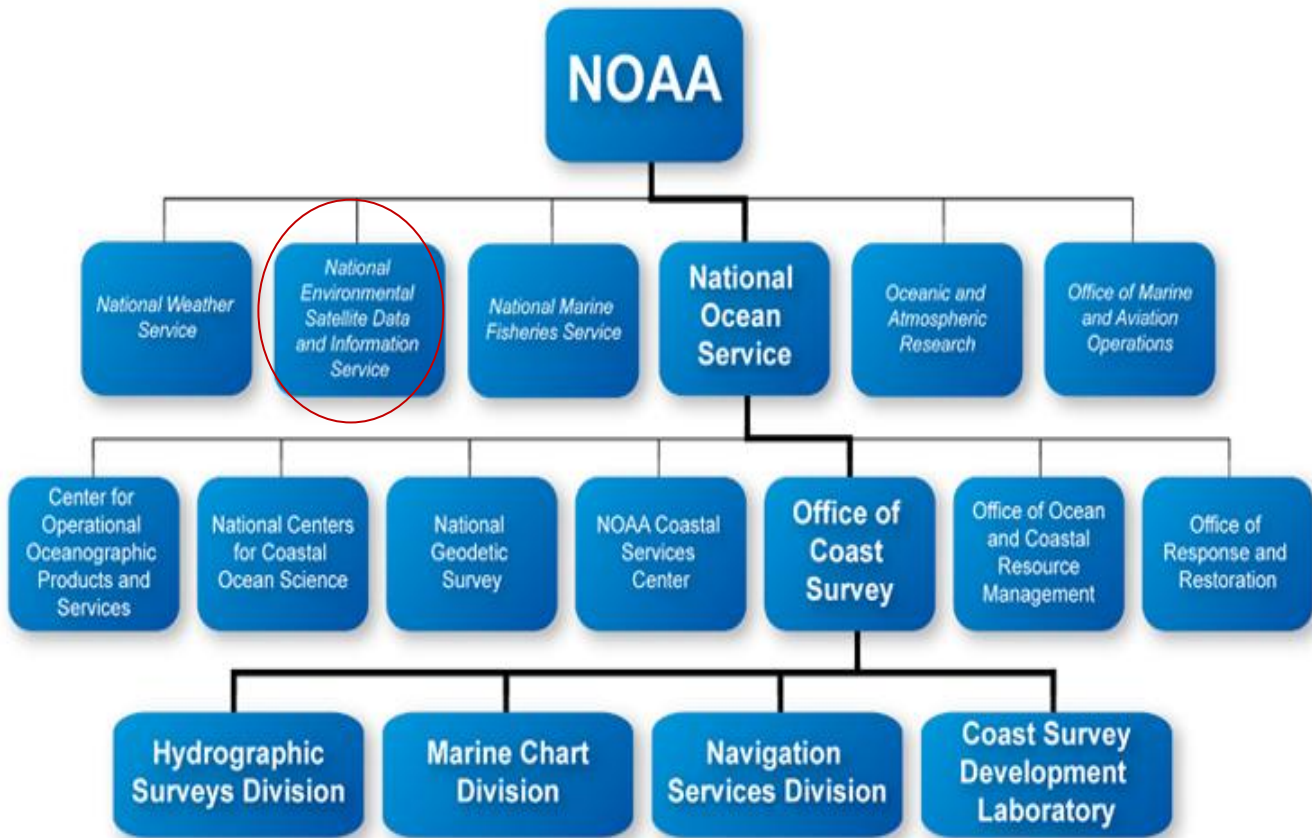


**SUPPLEMENT MATERIALS**

**NOAA (National Oceanic and Atmospheric Administration)**

<http://www.noaa.gov/>



**NESDIS (National National Environmental Satellite, Data, and Information Service)**

<http://www.nesdis.noaa.gov/>

The National Environmental Satellite, Data, and Information Service (NESDIS) is dedicated to providing timely access to global environmental data from satellites and other sources to promote, protect, & enhance the Nation's economy, security, environment, & quality of life.

NESDIS acquires and manages the Nation's operational environmental satellites, operates the NOAA National Data Centers, provides data and information services including Earth system monitoring, performs official assessments of the environment, and conducts related research.

**STAR (Center for Satellite Applications and Research)**

<http://www.star.nesdis.noaa.gov/star/>

Center for Satellite Applications and Research (STAR) is the science arm of the National Environmental Satellite, Data and Information Service (NESDIS), which acquires and manages the nation's operational Earth-observing satellites.

NESDIS provides data from these satellites, and conducts research to make that possible.

---

**OSDPD (<http://www.osdpd.noaa.gov/ml/index.html>)**

The Office of Satellite Data Processing and Distribution (OSDPD) manages and directs the operation of the central ground facilities which ingest, process, and distribute environmental satellite data and derived products to domestic and foreign users.

OSDPD is part of NESDIS.

**Information about NOAA satellites:**

<http://www.nesdis.noaa.gov/SatInformation.html>

**Information on NOAA satellite products:**

<http://www.nesdis.noaa.gov/SatProducts.html>